

General Description

The SY28826 is a dual-channel 6A load switch. Its integrated N-channel MOSFETs feature extremely low $R_{DS(ON)}$, helping to reduce power loss during normal operation. The capacitor programmable soft-start time controls the output voltage's slew rate at start-up independently on each channel, minimizing the inrush current. This device also offers independent enable controls for complex system sequencing. It integrates a discharge resistor to ensure quick output discharge when the switches are turned off.

The SY28826 is available in a compact DFN 3mmx2mm-14pin package which requires minimal space and provides better thermal performance.

Features

- Dual-Channel 6A Load Switch
- Wide Input Voltage Range: 0.8V to 5.5V
- Low Bias Current:
 - 20 μ A Typical (Both Channels)
 - 18 μ A Typical (Single Channel)
- Extremely Low $R_{DS(ON)}$ for the Integrated Switch: 18m Ω ($V_{BIAS}=5V$)
- Programmable Soft-Start Time
- Compact Package: DFN3x2-14

Applications

- Notebook Tablet, or Net PCs
- Desktop PCs
- Servers
- Set Top Boxes
- E-Book or MIDs
- Smart TVs
- Routers
- Industrial PCs
- Solid-state Drives (SSD)

Typical Application

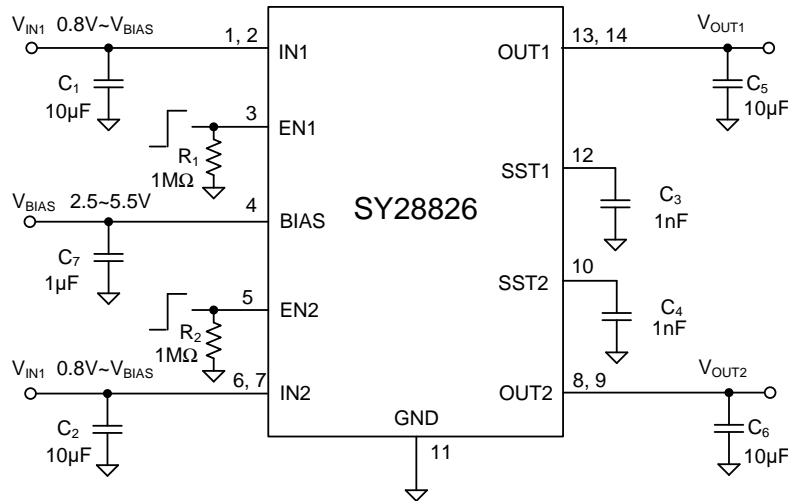


Figure 1. Schematic Diagram

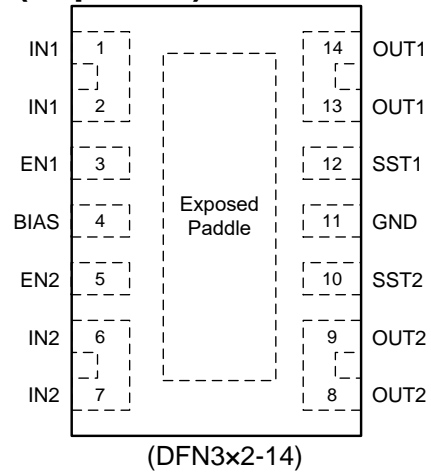
Ordering Information

Ordering Number	Package Type	Top Mark
SY28826DUC	DFN3x2-14 RoHS Compliant and Halogen Free	6Qxyz

Device code: 6Q

x=year code, y=week code, z= lot number code

Pinout (Top View)



Pin Name	Pin Number	Pin Description
IN1	1,2	Power input pin for channel 1.
EN1	3	Enable control input for channel 1. Pull High to enable channel 1. Do not leave floating.
BIAS	4	Bias pin. Bias supply for overdriving the gate of the pass switch between input and output. The recommended BIAS voltage range is 2.5V to 5.5V.
EN2	5	Enable control input for channel 2. Pull High to enable channel 2. Do not leave floating.
IN2	6,7	Power input pin for channel 2.
OUT2	8,9	Power output pin for channel 2.
SST2	10	Soft Start pin of channel 2. Connect a capacitor from this pin to the ground for slew rate programming. If not used in can be left floating.
GND	11	Ground pin.
SST1	12	Soft-Start pin of channel 1. Connect a capacitor from this pin to the ground for slew rate programming. If not used in can be left floating.
OUT1	13,14	Power output pin for channel 1.
Thermal Pad	Exposed pad	Thermal pad, tie to GND.

Block Diagram

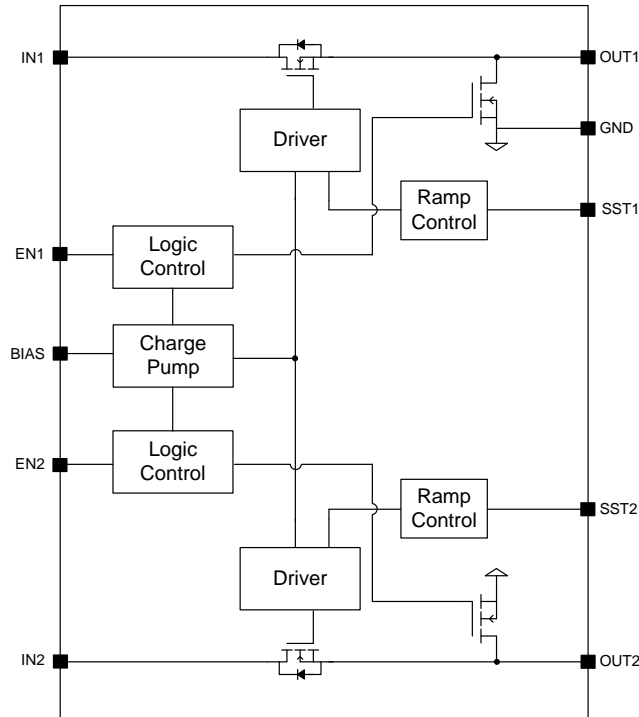


Figure 2. Block Diagram

Absolute Maximum Ratings

Parameter (Note 1)	Min	Max	Unit
IN1, IN2, OUT1, OUT2	-0.3	6	V
SST1, SST2	-0.3	OUT+6	
EN1, EN2, BIAS	-0.3	6	
Lead Temperature (Soldering, 10s)		260	°C
Junction Temperature, Operating	-40	150	
Storage Temperature	-65	150	

Thermal Information

Parameter (Note 2)	Typ	Unit
θ_{JA} Junction-to-Ambient Thermal Resistance	52.3	°C/W
θ_{JC} Junction-to-Case Thermal Resistance	11.5	
P_D Power Dissipation $T_A = 25^\circ\text{C}$	1.9	W

Recommended Operating Conditions

Parameter (Note 3)	Min	Max	Unit
IN1, IN2, OUT1, OUT2	0.8	V_{BIAS}	V
EN1, EN2	0	V_{BIAS}	
BIAS	2.5	5.5	
Junction Temperature, Operating	-40	125	°C
Ambient Temperature	-40	85	

Electrical Characteristics

($V_{IN} = V_{BIAS} = 5V$, $T_J = -40^{\circ}C$ to $+125^{\circ}C$. Typical values are at $T_J = 25^{\circ}C$, unless otherwise specified. The values are guaranteed by test, design or statistical correlation.)

Parameter	Symbol	Test Conditions		Min	Typ	Max	Unit	
Input Voltage Range	$V_{IN1,2}$			0.8		V_{BIAS}	V	
BIAS Voltage Range	V_{BIAS}			2.5		5.5	V	
BIAS Quiescent Current (Single Channel)	$I_{Q_BIAS_1}$	$V_{BIAS} = V_{IN1,2} = V_{EN1} = 5V$, $V_{EN2} = 0V$, $I_{OUT1,2} = 0A$, $-40^{\circ}C < T_A < 85^{\circ}C$			18	29	μA	
		$V_{BIAS} = V_{IN1,2} = V_{EN1} = 2.5V$, $V_{EN2} = 0V$, $I_{OUT1,2} = 0A$, $-40^{\circ}C < T_A < 85^{\circ}C$			7	14		
BIAS Quiescent Current (Both Channels)	$I_{Q_BIAS_2}$	$V_{BIAS} = V_{IN1,2} = V_{EN1,2} = 5V$, $I_{OUT1,2} = 0A$, $-40^{\circ}C < T_A < 85^{\circ}C$			20	30	μA	
		$V_{BIAS} = V_{IN1,2} = V_{EN1,2} = 2.5V$, $I_{OUT1,2} = 0A$, $-40^{\circ}C < T_A < 85^{\circ}C$			8	15		
BIAS Shutdown Current	I_{SHD_BIAS}	$V_{EN1,2} = 0V$, $V_{OUT1,2} = 0V$				2	μA	
Input Shutdown Current (per Channel)	I_{SHD_IN}	$V_{EN1,2} = 0V$, $V_{OUT1,2} = 0V$	$V_{BIAS} = 5V$	$V_{IN} = 5V$		0.5	8	μA
				$V_{IN} = 3.3V$		0.1	3	
				$V_{IN} = 1.8V$		0.07	2	
				$V_{IN} = 0.8V$		0.04	1	
			$V_{BIAS} = 2.5V$	$V_{IN} = 2.5V$		0.13	3	
				$V_{IN} = 1.8V$		0.07	2	
				$V_{IN} = 1.2V$		0.05	2	
				$V_{IN} = 0.8V$		0.04	1	
Integrate FET RON (per Channel)	$R_{DS(ON)}$	$V_{BIAS} = 5V$, $V_{IN} = 0.8V$ to $5V$, $I_{OUT} = 200mA$, $T_A = 25^{\circ}C$			18	25	m Ω	
		$V_{BIAS} = 5V$, $V_{IN} = 0.8V$ to $5V$, $I_{OUT} = 200mA$, $-40^{\circ}C < T_A < 85^{\circ}C$			18	27		
		$V_{BIAS} = 3.3V$, $V_{IN} = 0.8V$ to $3.3V$, $I_{OUT} = 200mA$, $T_A = 25^{\circ}C$			20	27		
		$V_{BIAS} = 3.3V$, $V_{IN} = 0.8V$ to $3.3V$, $I_{OUT} = 200mA$, $-40^{\circ}C < T_A < 85^{\circ}C$			20	30		
EN Turn-on Threshold	V_{EN_ON}			1.2			V	
EN Turn-off Threshold	V_{EN_OFF}					0.4	V	
Output Discharge Resistor	R_{DIS}				190	270	Ω	
Output Voltage Rise Time	t_{RISE}	$R_L = 10\Omega$, $C_L = 0.1\mu F$, $C_{SST} = 1nF$, $V_{EN} = 5V$	$V_{IN} = V_{BIAS} = 5V$	1030	1750	2850	μs	
			$V_{IN} = 0.8V$, $V_{BIAS} = 5V$	185	365	570		
			$V_{IN} = V_{BIAS} = 2.5V$	1310	2275	3550		
			$V_{IN} = 0.8V$, $V_{BIAS} = 2.5V$	450	825	1280		
Output Voltage Fall Time	t_{FALL}	$R_L = 10\Omega$, $C_L = 0.1\mu F$, $C_{SST} = 1nF$, $V_{EN} = 5V$	$V_{IN} = V_{BIAS} = 5V$	0.1	2	4	μs	
			$V_{IN} = 0.8V$, $V_{BIAS} = 5V$	0.1	2	4		
			$V_{IN} = V_{BIAS} = 2.5V$	0.1	2	4		
			$V_{IN} = 0.8V$, $V_{BIAS} = 2.5V$	0.1	2	4		
Turn On Delay Time	t_{D_ON}	$R_L = 10\Omega$, $C_L = 0.1\mu F$, $C_{SST} = 1nF$, $V_{EN} = 5V$	$V_{IN} = V_{BIAS} = 5V$	230	460	670	μs	
			$V_{IN} = 0.8V$, $V_{BIAS} = 5V$	140	290	435		
			$V_{IN} = V_{BIAS} = 2.5V$	430	850	1910		
			$V_{IN} = 0.8V$, $V_{BIAS} = 2.5V$	320	650	1120		
Turn Off Delay Time	t_{D_OFF}	$R_L = 10\Omega$, $C_L = 0.1\mu F$, $C_{SST} = 1nF$, $V_{EN} = 5V$	$V_{IN} = V_{BIAS} = 5V$	1	6	12	μs	
			$V_{IN} = 0.8V$, $V_{BIAS} = 5V$	1	6	12		
			$V_{IN} = V_{BIAS} = 2.5V$	5	15	25		
			$V_{IN} = 0.8V$, $V_{BIAS} = 2.5V$	5	15	25		

Note 1: Stresses beyond the “Absolute Maximum Ratings” may cause permanent damage to the device. These are stress ratings only. Functional operation of the device at these or any other conditions beyond those indicated in the operational sections of the specification is not implied. The device is mounted on a 2x2 FR-4 substrate PCB featuring 2oz copper. It includes the minimum recommended pad on the top layer, along with thermal vias connecting to the ground plane on the bottom layer. Exposure to absolute maximum rating conditions for extended periods may affect device reliability.

Note 2: θ_{JA} is measured in the natural convection at $T_A = 25^\circ\text{C}$ on a low effective single-layer thermal conductivity test board of JEDEC 51-3 thermal measurement standard. The exposed pad of the DFN3x2-14 package is the case position for θ_{JC} measurement.

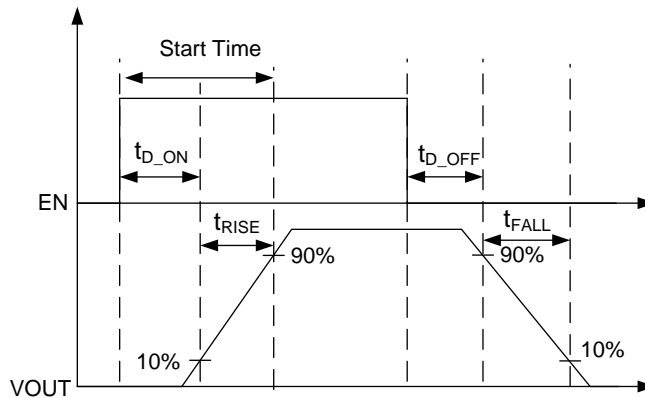
Note 3: The device is not guaranteed to function outside its operating conditions.

Note 4. Recommended Soft-Start Time Program Table:

Condition: RISE TIME (μs) 10% - 90%, $C_L = 0.1\mu\text{F}$, $C_{IN} = 1\mu\text{F}$, $R_L = 10\Omega$, TYPICAL VALUES at 25°C , $V_{BIAS} = 5\text{V}$, 25V X7R 10% CERAMIC CAP, under different V_{IN} .					
SST Cap (μF)	5V	3.3V	1.8V	1.5V	1.2V
0	210	154	104	93	81
220	555	385	231	209	178
470	1022	680	406	342	272
1000	1764	1208	714	616	488
2200	3808	2536	1450	1260	1024
4700	8200	5568	3192	2768	2296

Recommended Formula for C_{SST} & Soft-Start Slew Rate Calculation:

$$\frac{dV}{dt} = \frac{2.56}{C_{SST}(pF) + 145(pF)} (V/\mu s),$$



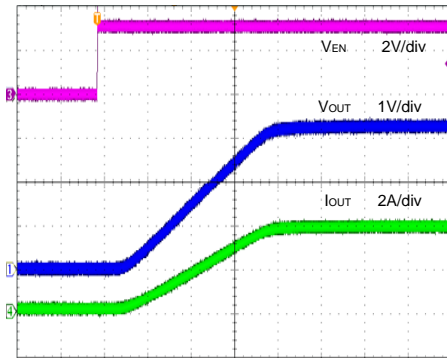
A capacitor to GND on the SSTx pins sets the slew rate for each channel. To ensure desired performance, a capacitor with a minimum voltage rating of 25V should be used on the SSTx pin.

(The equation accounts for 10% to 90% of measurement on VOUT).

Typical Performance Characteristics

Startup from Enable

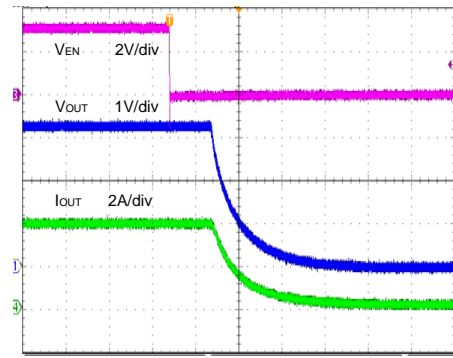
(VBIAS=VIN=3.3V, Io=4A)



Time (800µs/div)

Shutdown from Enable

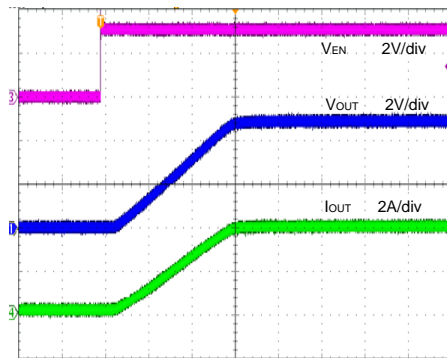
(VBIAS=VIN=3.3V, Io=4A)



Time (10µs/div)

Startup from Enable

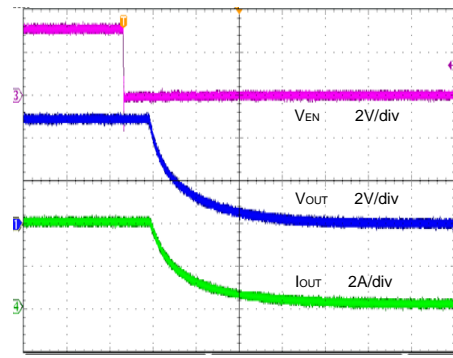
(VBIAS=VIN=5V, Io=4A)



Time (800µs/div)

Shutdown from Enable

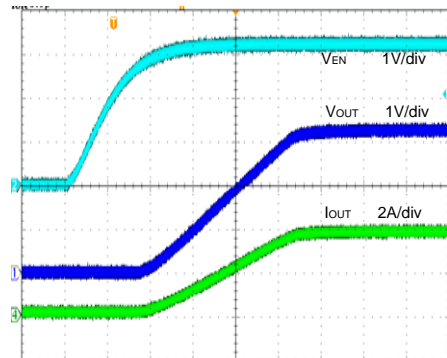
(VBIAS=VIN=3.3V, Io=4A)



Time (10µs/div)

Startup from BIAS

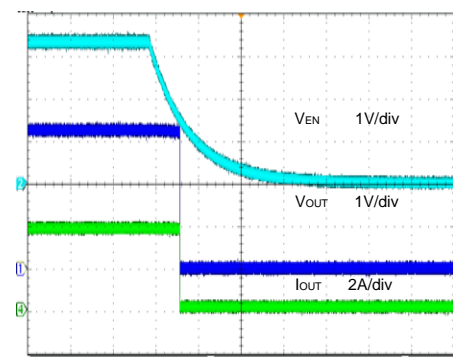
(VBIAS=VIN=3.3V, Io=4A)



Time (800µs/div)

Shutdown from BIAS

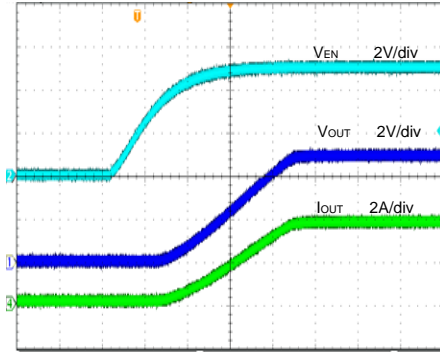
(VBIAS=VIN=3.3V, Io=4A)



Time (100ms/div)

Startup from BIAS

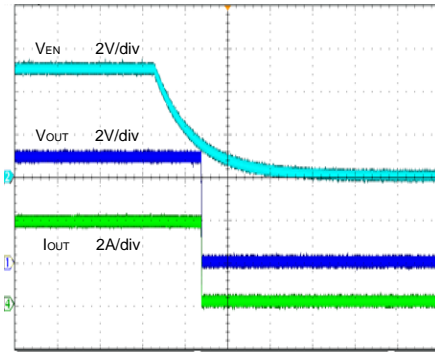
(VBIAS=VIN=5V, I_o=4A)



Time (800µs/div)

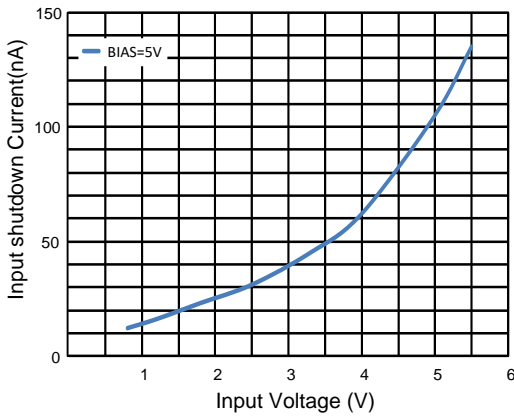
Shutdown from BIAS

(VBIAS=VIN=5V, I_o=4A)

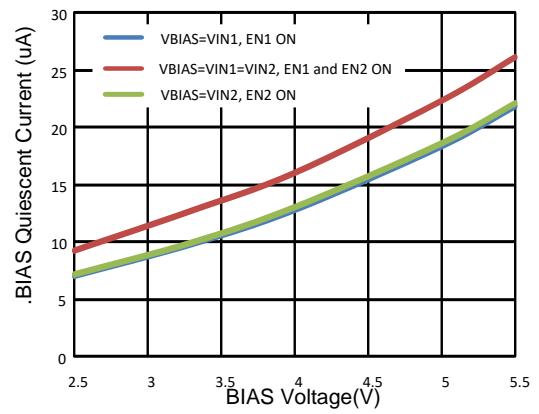


Time (100ms/div)

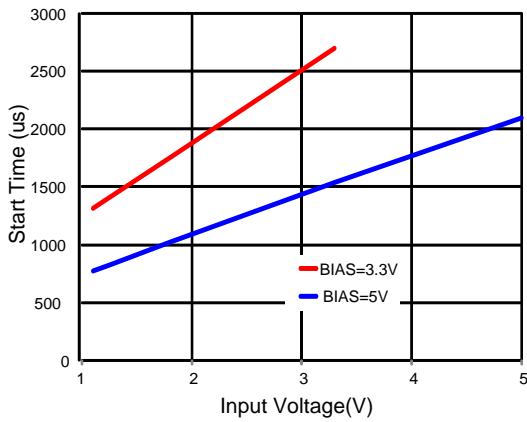
Input shutdown Current(per Channel)
vs. Input Voltage



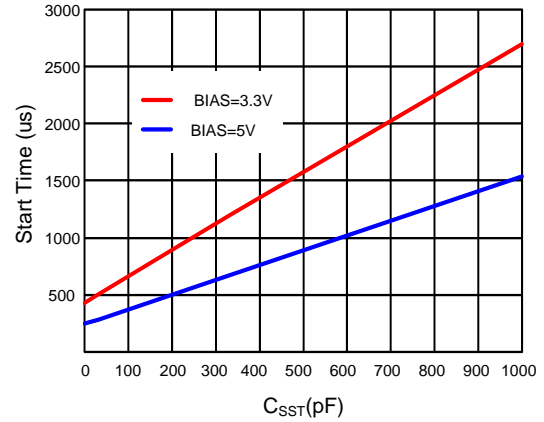
BIAS Quiescent Current vs. BIAS Voltage

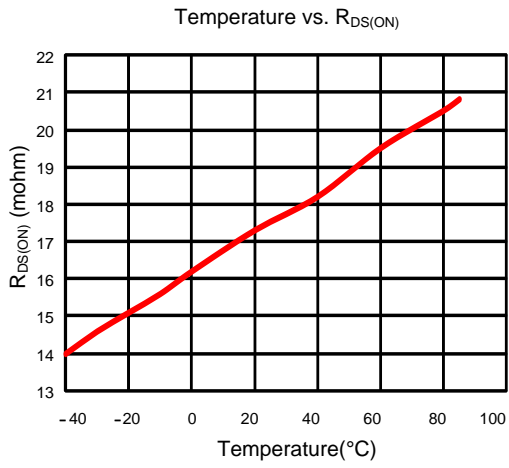


Start Time Vs. Input Voltage
(C_{SST}=NULL)



Start Time vs. CT
(V_{IN}=3.3V)





Application Information

The SY28826 is a dual-channel 6A load switch. The extremely low $R_{DS(ON)}$ of the integrated N-channel MOSFETs helps to reduce power loss during normal operation. The programmable soft-start time controls the slew rate of the output voltage during start-up and minimizes the inrush current. The switch offers independent enable control for complex system sequencing. Additionally, it integrates a discharge resistor to swiftly discharge the output when the switch is turned off.

The SY28826 is available in a compact DFN3x2-14 package which requires minimal space and provides improved thermal performance.

EN ON/OFF Control:

The EN pins control the state of the switches. Asserting EN high enables the switch. EN is active-high and has a low threshold, making it capable of interfacing with low-voltage signals. This pin cannot be left floating and must be tied either high or low for proper operation.

Input Capacitor:

In most applications, it is recommended to bypass IN_x to GND using $10\mu F$ ceramic capacitors, placed as close as possible to the device. If the power source exhibits significant inductance due to long lead lengths, the input capacitor helps to clamp any overshoot caused by the device's tank circuit.

V_{IN} and V_{BIAS} Voltage Range:

For optimal R_{ON} performance, make sure $V_{IN} \leq V_{BIAS}$. The device will still be functional if $V_{IN} > V_{BIAS}$ but the R_{ON} may exceed the typical value listed in Electrical Characteristics.

Soft-Start Time Program:

Connect a capacitor from SST pins to GND to control the slew rate of the output voltage at power-on. This pin can be left floating to obtain a predetermined slew rate (minimum T_{SST}) on the output. Use the following equation to determine the soft-start time:

$$SR_{OUT} = \frac{2.56}{C_{SST}(\text{pF}) + 145(\text{pF})} \text{ (v / } \mu\text{s)}$$

$$t_{RISE} = 0.8 \times \frac{V_{IN}}{SR_{OUT}} \text{ (}\mu\text{s)}$$

PCB Layout Guide:

For best performance of the SY28826, the following guidelines must be strictly followed:

1. Keep all power traces as short and wide as possible. It's recommended to use a 2-layer or 4-layer board for thermal performance and better current capability.
2. It is recommended to place a minimum of 6 vias around each power pin to efficiently distribute current across different layers of the PCB.
3. Place the input/output and BIAS capacitors close to the device for better transient performance.

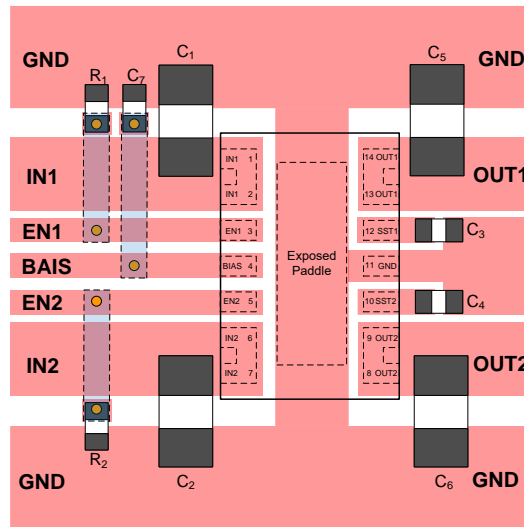
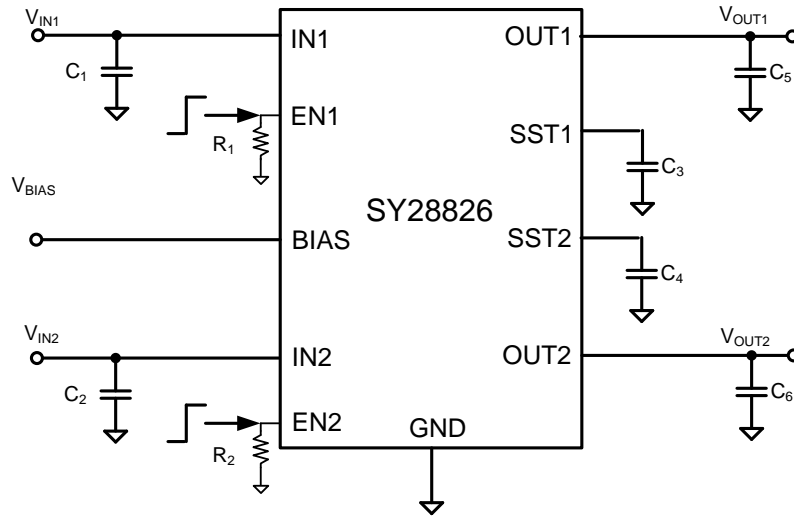


Figure 3. PCB Layout Suggestion

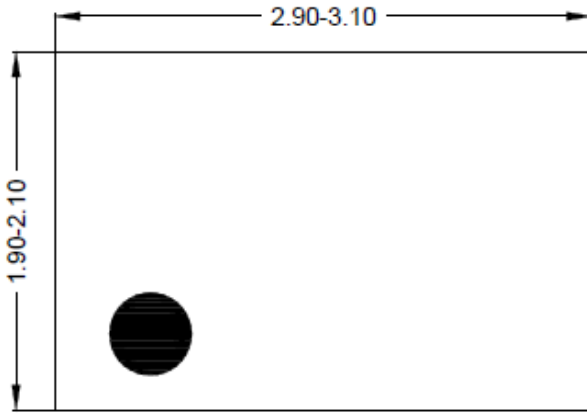
Schematic



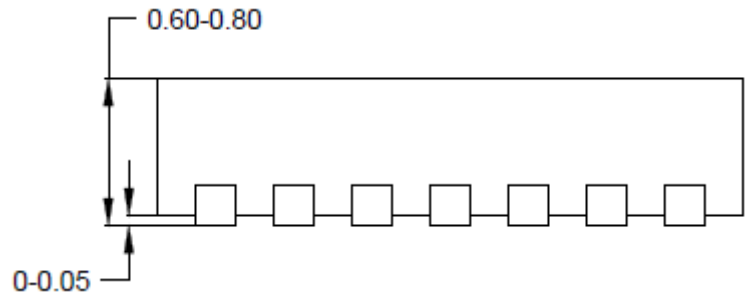
BOM List

Reference Designator	Description	Part Number	Manufacturer
C1	10 μ F/10V, 0805, X5R	GRM21BR71A106K	Murata
C2	10 μ F/10V, 0805, X5R	GRM21BR71A106K	Murata
C3	1nF/50V, 0603, X5R	GRM1885C1H102J	Murata
C4	1nF/50V, 0603, X5R	GRM1885C1H102J	Murata
C5	10 μ F/10V, 0805, X5R	C1608X5R1E105K	Murata
C6	10 μ F/10V, 0805, X5R	C1608X5R1E105K	Murata
R1	1M Ω , 0603		
R2	1M Ω , 0603		

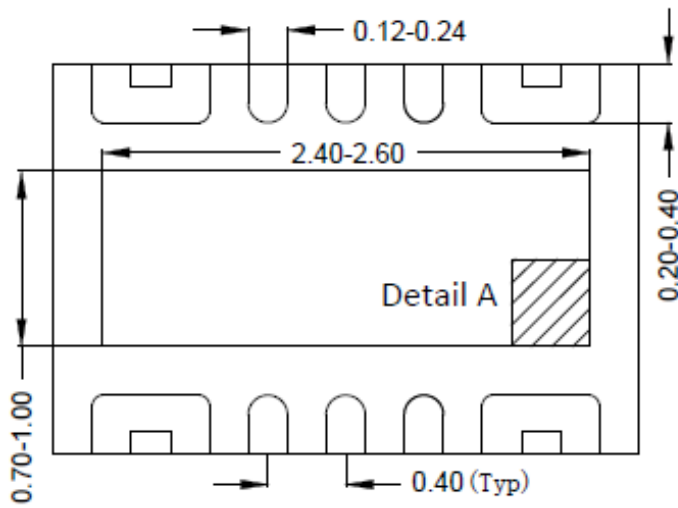
DFN3x2-14 Package Outline Drawing



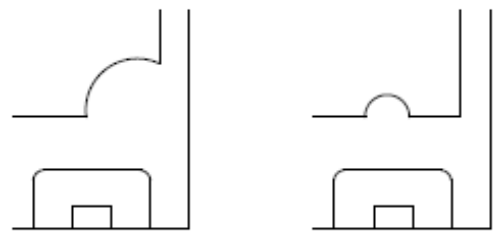
Top View



Side View

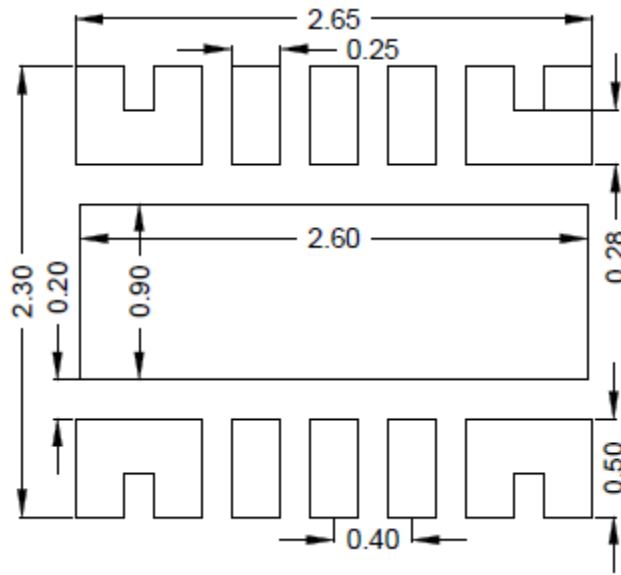


Bottom View



Detail A

Pin1 Identifier: two options

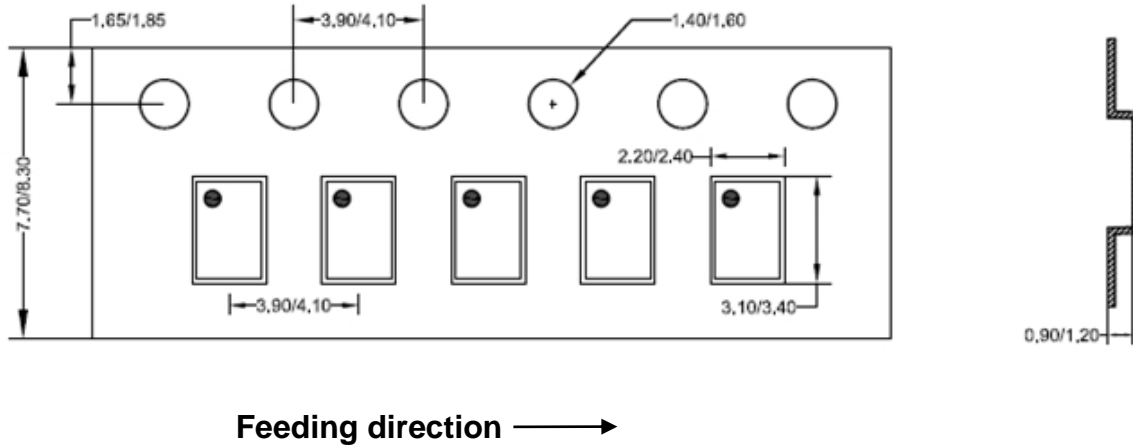


**Recommended PCB Layout
(Reference Only)**

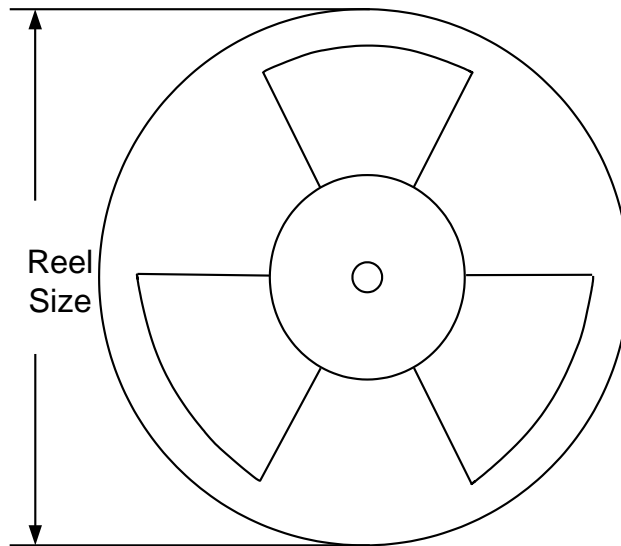
Note: All dimensions are in millimeters and exclude mold flash and metal burr.

Taping & Reel Specification

DFN3x2 Taping Orientation



Carrier Tape & Reel Specification for Packages



Package type	Tape width (mm)	Pocket pitch (mm)	Reel size (Inch)	Trailer length (mm)	Leader length (mm)	Qty per reel (pcs)
DFN3x2-14	8	4	7"	400	160	3000



Revision History

The revision history provided is for informational purpose only and is believed to be accurate, however, not warranted. Please make sure that you have the latest revision.

Date	Revision	Change
Jan.12,2024	Revision 1.0	Language improvements for clarity.
Dec.28, 2021	Revision 0.9A	Update the taping spec (Pin 1 is on the upper left.)
Jan.15, 2021	Revision 0.9	Initial Release



IMPORTANT NOTICE

1. **Right to make changes.** Silergy and its subsidiaries (hereafter Silergy) reserve the right to change any information published in this document, including but not limited to circuitry, specification and/or product design, manufacturing or descriptions, at any time and without notice. This document supersedes and replaces all information supplied prior to the publication hereof. Buyers should obtain the latest relevant information before placing orders and should verify that such information is current and complete. All semiconductor products are sold subject to Silergy's standard terms and conditions of sale.
2. **Applications.** Application examples that are described herein for any of these products are for illustrative purposes only. Silergy makes no representation or warranty that such applications will be suitable for the specified use without further testing or modification. Buyers are responsible for the design and operation of their applications and products using Silergy products. Silergy or its subsidiaries assume no liability for any application assistance or designs of customer products. It is customer's sole responsibility to determine whether the Silergy product is suitable and fit for the customer's applications and products planned. To minimize the risks associated with customer's products and applications, customer should provide adequate design and operating safeguards. Customer represents and agrees that it has all the necessary expertise to create and implement safeguards which anticipate dangerous consequences of failures, monitor failures and their consequences, lessen the likelihood of failures that might cause harm and take appropriate remedial actions. Silergy assumes no liability related to any default, damage, costs or problem in the customer's applications or products, or the application or use by customer's third-party buyers. Customer will fully indemnify Silergy, its subsidiaries, and their representatives against any damages arising out of the use of any Silergy components in safety-critical applications. It is also buyers' sole responsibility to warrant and guarantee that any intellectual property rights of a third party are not infringed upon when integrating Silergy products into any application. Silergy assumes no responsibility for any said applications or for any use of any circuitry other than circuitry entirely embodied in a Silergy product.
3. **Limited warranty and liability.** Information furnished by Silergy in this document is believed to be accurate and reliable. However, Silergy makes no representation or warranty, expressed or implied, as to the accuracy or completeness of such information and shall have no liability for the consequences of use of such information. In no event shall Silergy be liable for any indirect, incidental, punitive, special or consequential damages, including but not limited to lost profits, lost savings, business interruption, costs related to the removal or replacement of any products or rework charges, whether or not such damages are based on tort or negligence, warranty, breach of contract or any other legal theory. Notwithstanding any damages that customer might incur for any reason whatsoever, Silergy' aggregate and cumulative liability towards customer for the products described herein shall be limited in accordance with the Standard Terms and Conditions of Sale of Silergy.
4. **Suitability for use.** Customer acknowledges and agrees that it is solely responsible for compliance with all legal, regulatory and safety-related requirements concerning its products, and any use of Silergy components in its applications, notwithstanding any applications-related information or support that may be provided by Silergy. Silergy products are not designed, authorized or warranted to be suitable for use in life support, life-critical or safety-critical systems or equipment, nor in applications where failure or malfunction of a Silergy product can reasonably be expected to result in personal injury, death or severe property or environmental damage. Silergy assumes no liability for inclusion and/or use of Silergy products in such equipment or applications and therefore such inclusion and/or use is at the customer's own risk.
5. **Terms and conditions of commercial sale.** Silergy products are sold subject to the standard terms and conditions of commercial sale, as published at <http://www.silergy.com/stdterms>, unless otherwise agreed in a valid written individual agreement specifically agreed to in writing by an authorized officer of Silergy. In case an individual agreement is concluded only the terms and conditions of the respective agreement shall apply. Silergy hereby expressly objects to and denies the application of any customer's general terms and conditions with regard to the purchase of Silergy products by the customer.
6. **No offer to sell or license.** Nothing in this document may be interpreted or construed as an offer to sell products that is open for acceptance or the grant, conveyance or implication of any license under any copyrights, patents or other industrial or intellectual property rights. Silergy makes no representation or warranty that any license, either express or implied, is granted under any patent right, copyright, mask work right, or other intellectual property right. Information published by Silergy regarding third-party products or services does not constitute a license to use such products or services or a warranty or endorsement thereof. Use of such information may require a license from a third party under the patents or other intellectual property of the third party, or a license from Silergy under the patents or other intellectual property of Silergy.

For more information, please visit: www.silergy.com

©2021 Silergy Corp.

All Rights Reserved.